

OIL-INJECTED SINGLE SCREW COMPRESSOR

TWO-STAGE AND LOW-PRESSURE SERIES



PRODUCT SPECIFICATION

TWO-STAGE & LOW-PRESSURE SPECIFICATION							
Model	FAD Pressure Mpa	FAD Capacity m³/min	Power (KW)	Con.Dia.	Noise dB(A)	N.W.(KG)	L*W*H mm
HOGFD75	0.7/0.8	18.0/16.0	75	DN80	75	3285	2680×1380×1900
HOGFD90	0.7/0.8/1.0	21.0/20.0/18.0	90	DN80	75	3300	2680×1380×1900
HOGFD110	0.8/1.0	24.0/20.0	110	DN80	75	3300	2680×1380×1900
HOGFD132	0.7/0.8	32.0/28.0	132	DN80	82	4800	3030×1760×1760
HOGFD160	0.7/0.8/1.0	38.0/33.0/31.0	160	DN80	82	6200	3660×2080×2260
HOGFD185	0.7/0.8/1.0	42.0/38.0/34.0	185	DN80	82	6300	3660×2080×2260
OGFD37-d	0.4	8.6	37/50	G 2"	70	1200	2000×980×1380
OGFD55-d	0.4	13.4	55/75	DN65	72	1800	2300×1220×1780
OGFD75-d	0.4	20.2	75/100	DN80	72	2450	2680×1320×1900
OGFD90-d	0.4	24.0	90/125	DN80	72	2450	2680×1320×1900
OGFD110-d	0.4	28.0	110/150	DN100	73	4330	3160×1690×2200
OGFD132-d	0.4	33.3	132/180	DN100	73	4330	3160×1690×2200
OGFD160-d	0.4	40.2	160/215	DN125	75	5200	3320×1690×2200
OGFD185-d	0.4	45.0	185/250	DN125	75	5200	3320×1690×2200
OGFD220-d	0.4	54.0	220/300	DN150	78	7200	3850×2050×2200

REMARKS: OTHER AIR-DISCHARGE PRESSURE AND MOTOR SPECIFICATION(DIFFERENT POWER SUPPLY)COULD BE CUSTOMIZED.

TWO-STAGE TYPICAL TRAIT



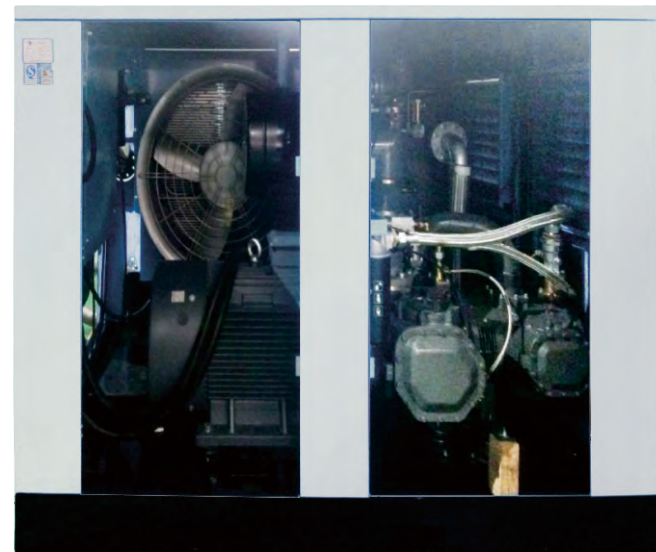
»»» TWO-STAGE AIR END

- Unique profile, enhancing the efficiency to 98%
- Stress balanced, far less moving parts
- Superb compressing-ratio distribution tech, Much better compressing efficiency



»»» CONTROL PANEL

- Easy and clear Reading of operation info.
- Compatible with multi-communication & control system



»»» ASYN. MOTOR

- Energy-efficient Motor with SKF bearing
- F-class insulation, IP54-class Protection
- Non-stop oil-feeding device



»»» FILTER & SEPARATOR

- Air Filtration efficiency to 99.99% with least pressure resistance
- Oil separation of better efficiency with residual contents2ppm

www.single.com.my

SINGLE[®]
www.single.com.my

ENERGY EFFICIENT AIR COMPRESSORS



LEADING by INNOVATION

ENTRY-LEVEL CLASSIC

DOUBLE SCREW COMPRESSOR

ZL (FIXED-SPEED) SERIES



ZMVF (PM MOTOR+ INVERTER) SERIES



PRODUCT SPECIFICATION

Model	Coupling/Belt	FAD Pressure Mpa	FAD Capacity m³/min	Power (KW)	Con. Dia.	N.W.(KG)	L*W*H mm
ZL-7.5/8	Coxial	0.8	1.2	7.5	G 3/4"	200	800*600*800
ZL-11/8	Coupling	0.8	1.7	11	G1"	280	1000*670*1100
ZL-15/8	Coupling	0.8	2.4	15	G1"	280	1000*670*1100
ZL-22	Coupling	0.8/1.0/1.3	3.6/3.2/2.7	22	G1"	390	1080*880*1235
ZL-37	Coupling	0.8/1.0/1.3	6.0/5.5/4.6	37	G1 1/2"	560	1350*850*1300
ZL45/8	Coupling	0.8	7.1	45	G1 1/2"	720	1500*1050*1350
ZL-55/8	Coupling	0.8	10.0	55	RP1 1/2"	790	1500*1050*1350
ZL-75/8	Coupling	0.8	13.0	75	G 2"	1200	1800*1200*1700
ZL-90/8	Coupling	0.8	16.0	90	G 2"	1250	1800*1200*1700
ZL-110/8	Coupling	0.8	21.0	110	DN 65	1680	2100*1250*1750
ZL-132/8	Coupling	0.8	24.0	132	DN 65	1750	2100*1250*1750

REMARKS: OTHER AIR-DISCHARGE PRESSURE AND MOTOR SPECIFICATION(DIFFERENT POWER SUPPLY) COULD BE CUSTOMIZED.

PRODUCT SPECIFICATION

Model	Dis. Pressure Range MPa	Dis. Capacity Range m³/min	Power kW	Connect Dia.	Weight kg	Dimension(L*W*H) mm
ZMVF7.5	0.65-1.0	1.0-1.25	7.5	G3/4	170	880×510×800
ZMVF11	0.65-1.0	1.5-1.85	11	G1	220	1000×670×1090
ZMVF15	0.6-1.0	2.0-2.4	15	G1	250	1000×670×1090
ZMVF22	0.6-1.0	2.9-4.0	22	G1	330	1200×800×1120
ZMVF37	0.6-1.0	5.0-6.4	37	G1 1/2	500	1340×850×1330
ZMVF45	0.6-1.0	6.4-8.3	45	G1 1/2	660	1480×1030×1365
ZMVF55	0.6-1.0	8.1-9.9	55	G1 1/2	710	1480×1030×1365
ZMVF75	0.6-1.0	10.0-13.2	75	G2	1170	1800×1190×1710
ZMVF90	0.6-1.0	12.0-16.0	90	G2	1180	1800×1190×1710
ZMVF110	0.6-0.8	23.0	110	DN65	1770	2700×1230×1730
ZMVF132	0.6-0.8	25.0	132	DN65	1860	2700×1230×1730

TYPICAL TRAITS



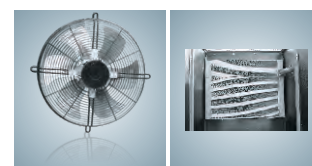
SUPERIOR AIR END

- The Female rotor and male rotor are precisely matched to reduce backflow leakage, which is the first guarantee for the efficient Air-end.
- The mainframe structure is simple and compact, no wearing parts, reliable operation.



BUILT-IN OIL SEPARATOR

- Built-in oil separator to ensure oil /air separation and minimize the oil consumption.
- The oil separator is designed to have a long service life.



COMBINED AFTER-COOLER

- Aluminum plate-fin heat exchanger with unique fin structure for cooling.
- High-efficiency axial-flow cooling fan with excellent performance. Even in the warm areas of the south, it will not affect the normal use.



USER-FRIENDLY CONTROLLER

- LED English interface, the operating status is clear at a glance.
- Maintenance tips for user-friendly operation.
- Leave the backup output port for multi-unit interlock control and remote diagnostic control.

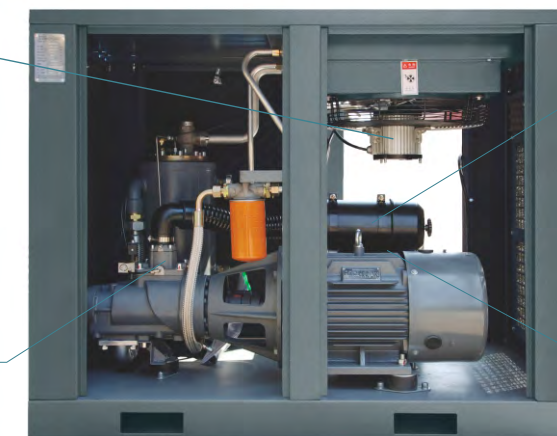
TYPICAL TRAITS



Cooling System



Intake Valve



Air Filter



VFD controller

OIL-INJECTED INDUSTRIAL SCROLL COMPRESSOR

OX SERIES



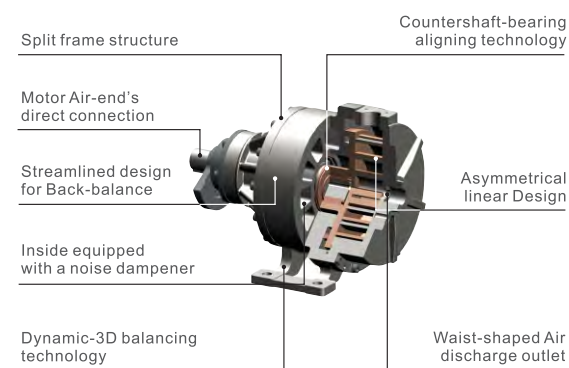
PRODUCT SPECIFICATION

Model	OX-4 / OX-5	OX-7.5	OX-15	OX-11	OX-22			
FAD Capacity (M3/min)	0.7	0.9	1.1	1.8	2.2	1.7	3.4	
FAD Pressure (Mpa)	0.8	1	0.8	1	0.8	0.8	0.8	
Intake Temperature(°C)	Ambient TMP < 40°C		Ambient TMP < 40°C		Ambient TMP < 40°C		Ambient TMP < 40°C	
Noise (dBA)	(57-62)±3		(57-62)±3		(57-62)±3		(57-62)±3	
Oil Content in Air (ppm)	≤3, oilless		< 3, oilless		≤3, oilless		≤3, oilless	
Motor	Rotating Speed(rpm)	2875-3450	2875-3450	2875-3450	2875-3450	2875-3450	2875-3450	
	Power(KW/HP)	4.5-5.5 /6-7.5	7.5/10	7.5/10	15/20	15/20	11 /15	22 /30
	Startup Mode	Direct startup, coupling connection		Direct startup, coupling connection		Direct startup, coupling connection		
	Voltage/Frequency/Phase	200-480V / 50 (or 60Hz) /3Ph		200-480V / 50 (or 60Hz) /3Ph		200-480V / 50 (or 60Hz) /3Ph		
	Dimension (L*W*H) mm	900*480*1010	960*480*1070	900*480*690	900*560*800	1200*710*1000	1000*600*900 ; 1350*800*1050	
	Net Weight (kg)	185	203	150	238	428	300	500
	Standard Configure	With 75L tank	With 100L tank	Without Tank	Without Tank	Without Tank	Without Tank	

REMARKS: OTHER AIR-DISCHARGE PRESSURE AND MOTOR SPECIFICATION(DIFFERENT POWER SUPPLY)COULD BE CUSTOMIZED.

TOP QUALITY COMES FROM AIR-END'S TOP DESIGN

8PATENTS(4INVENTIONS)INTEGRATED IN ONE DESIGN



ENERGY-EFFICIENT

- Asymmetrical linear & Waist-shaped outlet design, to minimize resistance & throttling loss.
- Motor Air-end's direct connection to reduce the belt-driving loss.

RELIABLE

- Fewer structural parts, to raise its reliability
- Non-contacting Scroll, non-abrasive design
- Low-stress & Frame design to minimize bearing stressed

LOW NOISE

- Streamlined design for Back-balance, and inside equipped with a noise dampener
- Dynamic-3D & Countershaft-bearing aligning design, to minimize mechanical vibration.

ECONOMICAL

- Low maintenance cost
- Only requires periodic change of oil and filter
- More energy efficiency than piston Air Compressor

OXX (LASER-CUTTING USE) SERIES



PRODUCT SPECIFICATION

Model	OXXA11-1.1/16H	OXX-1.1/16H
Air discharge capacity (m³/min)	1.1	1.1
Air discharge pressure (MPa)	1.6	1.6
Supplied-air Temp (°C)	Ambient temperature+15°C	
Noise dB(A)	70±3	70±3
Oil-content in supplied-air	≤3, Micro oil	
Motor	Rotating speed (r/min)	2930
	Power (kW/HP)	11/15
	Startup mode	Y-Δ start, Direct connection
	V/Hz/Ph	220 - 440V /50 (60) Hz /3Ph
LxWxH (mm)	1686×693×1543	1060×680×970
N.W.(kg)	483	340
Standard configuration	Built-in Dryer + 300L Tank	NAKED COMPRESSOR

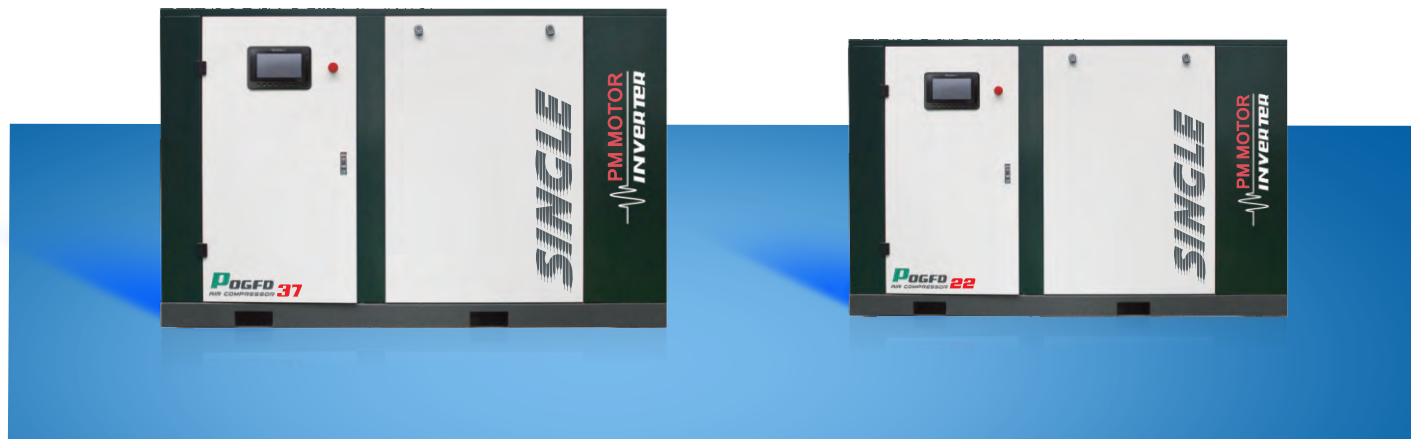
TYPICAL TRAIT



- Built-in aftercooler, low exhaust temperature
- Built-in drainage filter to ensure the cooling effect of the dryer
- Built-in dryer, supply high quality air, wider application range
- Stable air supply pressure, more suitable for laser cutting equipment
- Integrated with air compressor, air dryer, air receiver tank, saving installation space; eliminating the need for pipeline installation between compressor, waterseparator, air dryer, air receiver tank

OIL-INJECTED SINGLE SCREW COMPRESSOR

POGFD (PM MOTOR+INVERTER) SERIES

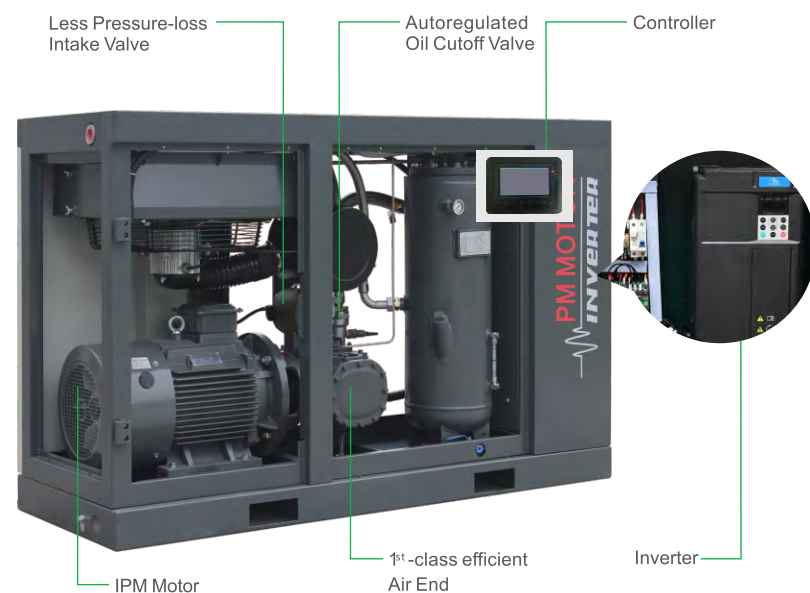


PRODUCT SPECIFICATION

Model	Rated Pressure Mpa	Pressure Range MPa	Rating Cap. m³/min	Step Cap. Range m³/min	Full Cap. Range m³/min	Motor Power kW	Noise dB(A)	Connection	Weight kg	Dimension LxWxH (mm)
POGFD22	0.7	0.6-0.7	3.8	1.36-3.8	1.39-3.8	22	66	G1"	550	1450x700x1100
	0.8	0.6-0.8	3.6	1.35-3.8						
	1	0.6-1	3.1	1.39-3.8						
POGFD37	0.7	0.6-0.7	6.4	2.3-6.4	2.38-6.4	37	68	G1 1/2"	800	1660x820x1230
	0.8	0.6-0.8	6	2.25-6.4						
	1	0.6-1	5.3	2.38-6.4						
POGFD55	0.7	0.6-0.7	10.3	3.71-10.3	3.87-10.3	55	70	G2"	1200	2000x980x1356
	0.8	0.6-0.8	9.6	3.6-10.3						
	1	0.6-1	8.6	3.87-10.3						

REMARKS: OTHER AIR-DISCHARGE PRESSURE AND MOTOR SPECIFICATION(DIFFERENT POWER SUPPLY)COULD BE CUSTOMIZED.

TYPICAL TRAIT



OGFDX (LASER-CUTTING USE) SERIES

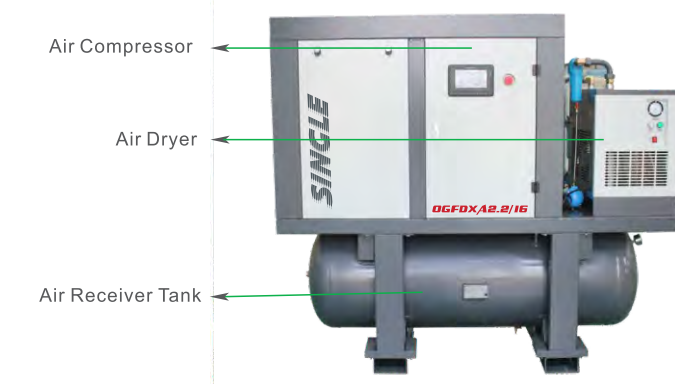


PRODUCT SPECIFICATION

型号Model	OGFD2.2/16	POGFD2.2/16	OGFDXA2.2/16	POGFDXA2.2/16	OGFD3.5/16	POGFD3.5/16	
Rated Capacity(m³/min)	2.2		2.2		3.5		
Rated Capacity(MPa)	1.6						
Supply air temperature(°C)	Ambient temperature+15°C				Ambient temperature+15°C		
Motor	Rotating speed (rpm)	2930	3000	2930	3000	3000	
	power (kW)	22					
	Startup mode	Y-Δ Start up	VFD start	Y-Δ Start up	VFD start	Y-Δ Start up	VFD start
	Voltage / frequency / PHASE (V/Hz/PH)	AC 380V/50Hz/3PH					
Oil content of the air supplied by compressor(ppm)	≤3						
Tank volume (L)	500			500			
Air Dryer Power supply (V/Hz/PH)	AC 220V/50Hz/1PH						
The oil content of the air supplied by the post-treatment(ppm)	≤0.01						
Dust particle size of the air supplied by the post-treatment (μm)	≤0.01						
Pressure dew point of the air supplied by the post-treatment(°C)	3~10						
L*W*H(mm)	1450*810*1110		2215*826*1836		1900*820*1230		
Weight(kg)	550	560	970	980	840	860	
Standard configuration	With dryer, receiver tank, line filter						

Model	Treating Capacity	tank volume (L)	Voltage/ frequency/ phase(V/Hz/PH)	Ambient TEMP(°C)	Intake air TEMP(°C)	Operational pressure(MPa)	Pressure Dew point of air supplied(°C)	Weight(kg)	L*W*H (mm)
3.5/16H Post-treating Units	3.8 m³/min	600	AC 220V/50Hz/1PH	≤38	≤80	0.6~1.6	3~10	385	1670*812*2080

TYPICAL TRAIT



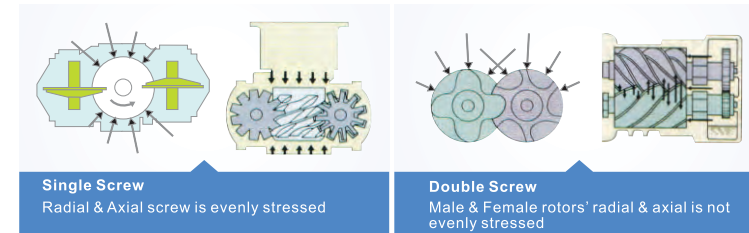
- ⊙ Built-in aftercooler, low exhaust temperature
- ⊙ Built-in drainage filter to ensure the cooling effect of the dryer
- ⊙ Built-in dryer, supply high quality air, wider application range
- ⊙ Stable air supply pressure, more suitable for laser cutting equipment
- ⊙ Integrated with air compressor, air dryer, air receiver tank, saving installation space; eliminating the need for pipeline installation between compressor, waterseparator, air dryer, air receiver tank

OIL-INJECTED SINGLE SCREW COMPRESSOR

SINGLE SCREW AIR COMPRESSOR



STRESS COMPARISON:



SINGLE SCREW MERIT

EXCLUSIVE TOOTH-FACE PROFILE WITH SUPERB SEALING PERFORMANCE

- Volumetric efficiency up to 98%. 10% more efficient than conventional twin-screw

ADVANCED DESIGNED SINGLE SCREW TECHNOLOGY

- Balance stress load on bearings
- Twice the bearing life compared to double screw design
- Lower noise level: 60-68 dB(A) vs 64-78 dB(A) of double screw

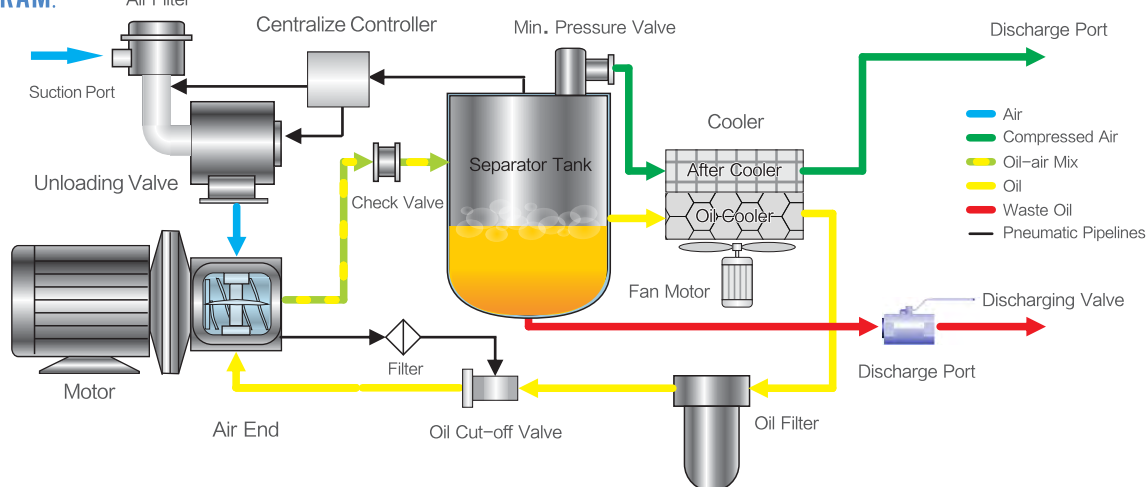
BETTER EFFICIENCY THAN DOUBLE SCREW DESIGN

- Less vibration
- Less stress
- Lower specific power
- Low speed
- Lower discharge temperature < 90°C
- Direct coupled transmission

5-YEAR AIR END WARRANTY

USING REPUTABLE COMPONENT SUPPLIERS

SYSTEM DIAGRAM:

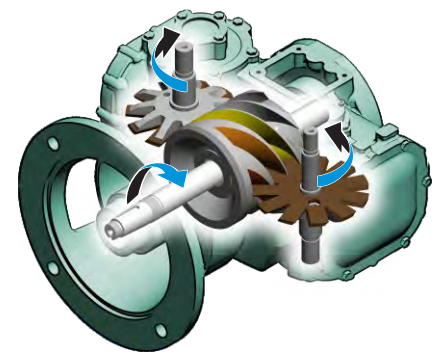


PRODUCT SPECIFICATION

Range	Item	Model	Dis. Cap. m ³ /min	Dis. Pressure Mpa	Noise dB (A)	Motor (Y-start) Power (KW/HP)	Connect Dia.	Dimension L×W×H(mm)	Weight Kg
OG(F)D18.5	SC	OG(F)D-3.2/7	3.2	0.7	66	18.5/25	G1"	1450×650×1100	500
		OG(F)D-3.0/8	3.0	0.8					
		OG(F)D-2.7/10	2.7	1.0					
OG(F)D22	SC	OG(F)D-2.3/12.5	2.3	1.25	66	22/30	G1"	1450×650×1100	515
		OG(F)D-3.8/7	3.8	0.7					
		OG(F)D-3.4/8	3.4	0.8					
OG(F)D30	SC	OG(F)D-3.1/10	3.1	1.0	68	30/40	G1 1/2"	1620×860×1250	780
		OG(F)D-2.8/12.5	2.8	1.25					
		OG(F)D-5.3/7	5.3	0.7					
OG(F)D37	SC	OG(F)D-6.4/7	6.4	0.7	69	37/50	G1 1/2"	1620×860×1250	800
		OG(F)D-6.1/8	6.1	0.8					
		OG(F)D-5.3/10	5.3	1.0					
OG(F)D45	SC	OG(F)D-4.7/12.5	4.7	1.25	72	45/60	G2"	2000×980×1400	1170
		OG(F)D-8.0/7	8.0	0.7					
		OG(F)D-7.2/8	7.2	0.8					
OG(F)D55	SC	OG(F)D-6.3/10	6.3	1.0	72	55/75	G2"	2000×980×1400	1200
		OG(F)D-9.6/8	9.6	0.8					
		OG(F)D-8.6/10	8.6	1.0					
OG(F)D75	SC	OG(F)D-7.2/12.5	7.2	1.25	74	75/100	G2"	2300×1220×1780	1750
		OG(F)D-13.6/7	13.6	0.7					
		OG(F)D-12.6/8	12.6	0.8					
OG(F)D90	SC	OG(F)D-11.5/10	11.5	1.0	90/125	DN80 G2 1/4"	2680×1320×1900	air-cooled 2455 water-cooled 2305	1200
		OG(F)D-9.5/12.5	9.5	1.25					
		OG(F)D-16.8	16.8	0.7					
OG(F)D110	SC	OG(F)D-16.0	16.0	0.8	110/150	DN80 G2 1/4"	2680×1320×1900	air-cooled 2855 water-cooled 2700	1750
		OG(F)D-14.3	14.3	1.0					
		OG(F)D-12.3	12.3	1.25					
OG(F)D132	SC	OG(F)D-21.0	21.0	0.7	132/180	G2"	2300×1220×1780	air-cooled 3075 water-cooled 2820	1750
		OG(F)D-19.8/8	19.8	0.8					
		OG(F)D-17.1/10	17.1	1.0					
OG(F)D160	SC	OG(F)D-14.8/12.5	14.8	1.25	160/215	G2"	2300×1220×1780	air-cooled 3980 water-cooled 3980	1750
		OG(F)D-23.8/7	23.8	0.7					
		OG(F)D-22.2/8	22.2	0.8					
OG(F)D185	SC	OG(F)D-20.2/10	20.2	1.0	185/250	DN80	3160×1690×2200 Water-cooled 2250×1800×1920	air-cooled 4330 water-cooled 4050	1750
		OG(F)D-17.6/12.5	17.6	1.25					
		OG(F)D-29.5/7	29.5	0.7					
OG(F)D200	SC	OG(F)D-28.8/8	28.8	0.8	200/270	G2"	2300×1220×1780	air-cooled 4450 water-cooled 4200	1750
		OG(F)D-24.5/10	24.5	1.0					
		OG(F)D-21.0/12.5	21.0	1.25					
OG(F)D220	SC	OG(F)D-33.8/7	33.8	0.7	220/300	DN100	3570×1690×2200 Water-cooled 3150×2050×2213	air-cooled 5260 water-cooled 5500	1750
		OG(F)D-32/8	32.0	0.8					
		OG(F)D-24.5/12.5	24.5	1.25					
OG(F)D250	SC	OG(F)D-36.6/7	36.6	0.7	250/340	G2"	2300×1220×1780	air-cooled 5590 water-cooled 5590	1750
		OG(F)D-34.5/8	34.5	0.8					
		OG(F)D-30.8/10	30.8	1.0					
OG(F)D315	SC	OG(F)D-26/12.5	26.0	1.25	315/430	DN125	3300×2000×2315	air-cooled 8060 water-cooled 7400	1750
		OG(F)D-40.2/7	40.2	0.7					
		OG(F)D-37.6/8	37.6	0.8					
OG(F)D355	SC	OG(F)D-33/10	33.0	1.0	355/480	G2"	2300×1220×1780	air-cooled 8060 water-cooled 7530	1750
		OG(F)D-29.5/12.5	29.5	1.25					
		OG(F)D-45.8/7	45.8	0.7					
OG(F)D46/12.5	SC	OG(F)D-42.8/8	42.8	0.8	78	DN125	3450×2050×2300	air-cooled 8060 water-cooled 7530	1750
		OG(F)D-39/10	39.0	1.0					
		OG(F)D-33.6/12.5	33.6	1.25					
OG(F)D58.8/7	SC	OG(F)D-58.8/7	58.8	0.7	78	DN125	3450×2050×2300	air-cooled 8060 water-cooled 7530	1750
		OG(F)D-54.8/8	54.8	0.8					
		OG(F)D-48.5/10	48.5	1.0					
OG(F)D66/7	SC	OG(F)D-39/12.5	39.0	1.25	78	DN125	3450×2050×2300	air-cooled 8060 water-cooled 7530	1750
		OG(F)D-66/7	66.0	0.7					
		OG(F)D-61/8	61.0	0.8					
OG(F)D61/8	SC	OG(F)D-55/10	55.0	1.0	78	DN125	3450×2050×2300	air-cooled 8060 water-cooled 7530	1750
		OG(F)D-55/10	55.0	1.0					
		OG(F)D-46/12.5	46.0	1.25					

OIL-FREE WATER-INJECTED SINGLE SCREW COMPRESSOR

WATER INJECTED SCREW TECHNOLOGY



ENERGY EFFICIENT, ENVIRONMENT FRIENDLY SINGLE SCREW TECHNOLOGY

- High volumetric efficiency

WATER AS COOLANT

- Better isothermal compression efficiency

100% OIL FREE

LOW NOISE

STAINLESS STEEL COMPONENTS

- Rotor, shaft, casing are all corrosion resistant contributing to higher reliability

LOWER DISCHARGE TEMPERATURE

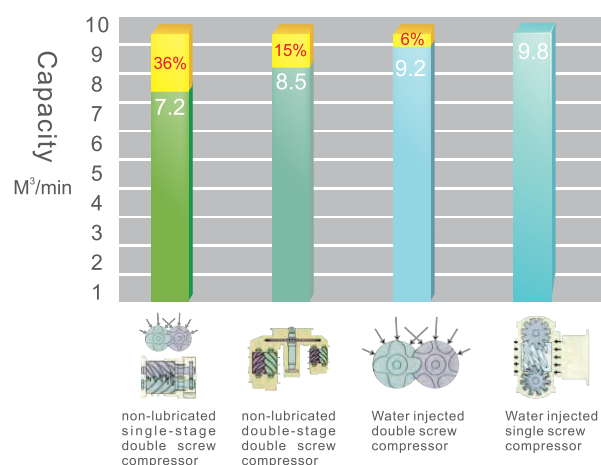
- Eliminate intercooler and isothermal losses

LOW MAINTENANCE COST

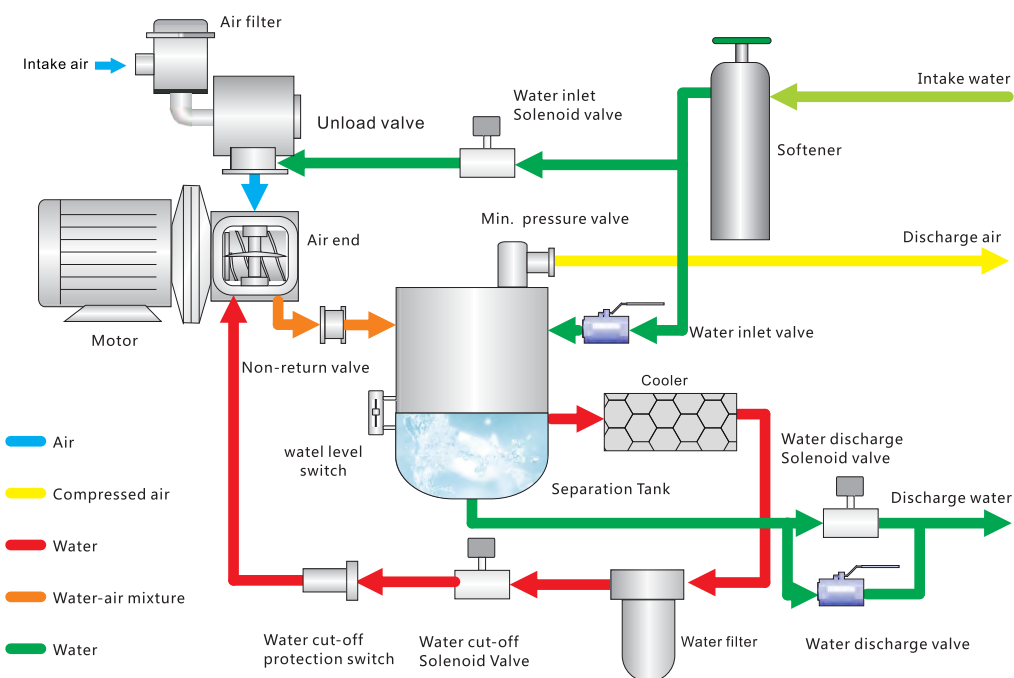
BUILT-IN WATER FILTER AND SOFTENER

- Low speed

THE ADVANTAGES OF ENERGY-EFFICIENT WATER INJECTED AIR COMPRESSOR (55kW, 0.7Mpa)



SYSTEMS FLOW CHART:



OGW(F)D OIL-FREE SERIES



TOP CLASS ENERGY EFFICIENT COMPRESSOR
LOW MAINTENANCE
100% OIL FREE
STAINLESS STEEL AIR END AND CASING

PRODUCT SPECIFICATION

Range	Item	Model	Dis. Cap. m³/min	Dis. Pressure Mpa	Noise dB (A)	Motor (Y-start)		Connect Dia.	Dimension L×W×H(mm)	Weight Kg
						Power (KW/HP)				
OGWFD11		OGWFD-1.5/7	1.5	0.7	58	11/15				500
		OGWFD-1.4/8	1.4	0.8						
OGWFD22		OGWFD-3.5/7	3.5	0.7	61	22/30		G1"	1400×865×1150	550
		OGWFD-2.7/10	2.7	1.0						
OGW(F)D30		OGW(F)D-5.2/7	5.2	0.7	66	37/50				1000
		OGW(F)D-4.8/10	4.8	1.0						
OGW(F)D37		OGW(F)D-6.1/7	6.1	0.7	66	37/50		Water-cooled	1870×1320×1480	1030
		OGW(F)D-5.6/8	5.6	0.8						
OGW(F)D45		OGW(F)D-4.8/10	4.8	1.0	70	50/75		G2"	Air-cooled	1870×1320×1480
		OGW(F)D-7.6/7	7.6	0.7						
OGW(F)D55		OGW(F)D-9.6/7	9.6	0.7	70	50/75				1630
		OGW(F)D-8.3/8	8.3	0.8						
OGW(F)D75		OGW(F)D-7.8/10	7.8	1.0	72	75/100				1875
		OGW(F)D-13.0/7	13.0	0.7						
OGWD90		OGW(F)D-11.3/8	11.3	0.8	72	90/125				2695
		OGW(F)D-10.6/10	10.6	1.0						
OGWD110		OGWD-16.1/7	16.1	0.7	72	110/150		DN80	2600×1470×1680	3090
OGWD132		OGWD-23.3/7	23.3	0.7	72	132/180				3210

REMARK:

- OG stands for Single Screw, W for water-injected series, F for air-cooled, water-cooled (available as option).
- Power supply: 220V-480V /50(60)Hz /3Ph.
- Noise level rating in accordance with ISO2151 /Pneuro /Cagi PN8NTC2, Tolerance 3 dB(A).